



Message from the Headteacher

Dear Families,

We are excited to share that our Sports Games Day is planned for 7th July. EYFS and KS1 events will take place in the morning with the KS2 events following in the afternoon.

Further details will be sent out after half term. In case of poor weather, we have set a reserve date of 14th July following the same structure. If it rains on that day then we will just be inside with the children meaning that sadly parents won't be invited to attend.

As we move through the Summer Term, we have a range of trips, competitions and visitors planned to enhance our curriculum and support our children's personal development.

We say goodbye to two staff members this month. Mr Riley is leaving to work at a school closer to home. He has been a wonderful site supervisor and we will all really miss him. Mrs Aspinall will also be retiring from her post, she has been a breath of fresh air to the team. We wish them both every happiness.

Enjoy the holidays.

Mrs Dugdale

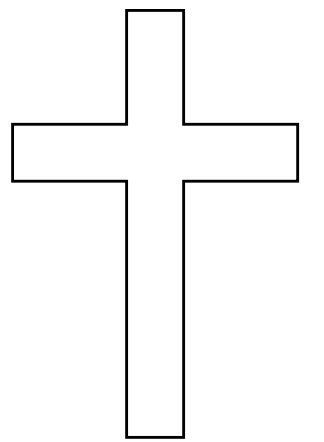


Worship

This year in collective worship, we are learning all about God's Big Story. Each week we are going to be introduced to a theme and a guest storyteller from Blackburn Diocese of Education.

Next month we will be learning all about:

- **David the Giant Killer**
- **Jesus Forgives Peter**
- **The Man Who Came Back**
- **The Lost Coin**
- **A Costly Message**



Class Worship

We have scheduled our class worships for the upcoming school year, which will be held at school. Families are invited into school to come and watch. Please see below for the date/time of your child's class.

Ash Class - Tuesday 1st July @ 2.30pm



School Lottery

The School Lottery is a brilliant resource for parents to sign up to. It provides funds for the PTFA and you can also win prizes weekly!

This week's results are in!

Remember to check your email to see if you've won!

If you haven't signed up yet visit our lottery here -

<https://www.yourschoollottery.co.uk/lottery/school/st-james-lanehead-church-of-england-primary-school>

Have a great weekend everyone!





Class Allocation - September 2025

Class Allocation

The Governing Board is writing to inform you of the class structure for the academic year 2025- 2026. We are very pleased that we are a school that has a full intake again. Many schools do not. We also have a waiting list for families who want their child to attend the school. **As you are all made fully aware when your child came to our school, we are a mixed age school, with a 40 intake and have 9 classes, therefore the classes are changed each year and children do get the opportunity to be with new friends.**

We do appreciate that mixed age classes can produce challenges to our school staff such as the curriculum coverage there are many benefits to this teaching approach. Our school staff are very capable and confident to ensure that the children are getting the correct curriculum. Many have years of experience doing this task.

School teachers and education professionals decide based on their extensive knowledge of all children and where children will be best placed to thrive academically and socially in every child's best interests. Whilst the Governing Board does appreciate that some parents may have concerns as to which class their children are part of, all children do keep daily contact with those in their age cohort and as a school every parent / carer is fully aware that we are a mixed age class school. Governors must therefore utilise the decision of the professionals in school rather than parental preference in order to operate a fair system. If this is not something you want for your child, then there are many schools who do not operate this system.

We want to clarify the frequently asked questions to our staff -

How are the classes are decided?

Reception Year

When children join St James' Lanehead, in reception year, the children are split by age. They are assessed throughout the reception year.

What happens in Year 1 to Year 6 ?

Whilst still moving up the school, in line with their cohort, they are split into classes based on Reading ability primarily in the other year groups.

How will I know if my child is making progress in a mixed age class with younger or older children?

In terms of progress, families receive three reports a year and parents consultation evenings. You are also invited into school if the teaching staff have concerns regarding progress. Key stage leaders collate books, assessments , speak with pupils and carry out teaching and learning audits in all classrooms.

We hope that this clarifies the decisions made by the board, and we pray that all our children and staff flourish in the academic year of 2025- 2026 with the support of all the families. Whatever class your child is allocated you will all, we are sure, be confident that they have a wonderful teacher and support staff member teaching them and enabling them to flourish.

The Governing Board of St James' Lanehead.



Beat the Street



Beat the Street is back!

Well done to all those who have already registered their Beat the Street Cards online and have been taking part in the competition. We are in competition with a few other schools in our area and are currently in 3rd place!

If you haven't yet registered your cards, make sure you do this ASAP and register to our school. We are going to be holding lots of in school competitions over the next few weeks.

Well done to our reception pupils who are currently in the lead!

Each week there is a different theme with opportunities for you to gain extra points!

Themed weeks

Week 1 14 th – 20 th May		
Week 2 21 st – 27 th May		Double points on weekdays between 7-9am and 3-6pm.
Week 3 28 th May – 3 rd June		Double points on boxes in green and blue spaces.
Week 4 4 th – 10 th June		Double and triple points on surprise boxes around town.
Week 5 11 th – 17 th June		Double points on boxes in green and blue spaces.
Week 6 18 th – 25 th June		Double points all week.

Year 6 - SATs

Monday 12th May saw the beginning of our SATs week, that our Year 6 children have been working hard towards, both in the classroom and in their intervention groups with Mrs Aspinall. We are so very proud of how all the children approached the SATs and conducted themselves during the assessments. They worked as a team, supported each other and behaved impeccably. As a treat, we were able to enjoy a Forest School morning where the children made: swings, kites, dens and cooked flatbread on the fire. A good time was had by all and we have used the morning to create a recount write including lots of Year 6 skills. A big thank you to Mrs Burnett for organising such a great morning for us all!





Bunny Hop - Pendleside Hospice

We recently held a fantastic fundraising event for Pendleside Hospice through a fun-filled Bunny Hop. The children took part in a variety of exciting activities led by our Sports Leaders, Ava, Grace, Jessica and Zachary, who did a brilliant job keeping everyone engaged and active.

Thanks to the incredible generosity of St James' families, we are proud to share that we raised an amazing **£3,648.97**. This event not only brought joy to the children but also helped support the vital work of Pendleside Hospice.

Leah and the Pendleside mascot, Penny, came in to school to share the amazing news!

Thank you again for everyone who donated to this amazing charity.





Elm Class - St Anne's

Elm class visited the beach this half term, the children had a fabulous day building sandcastles and enjoyed an ice cream treat afterwards. As always the children behaved exceptionally.



Ash Class - Thornton Hall Farm

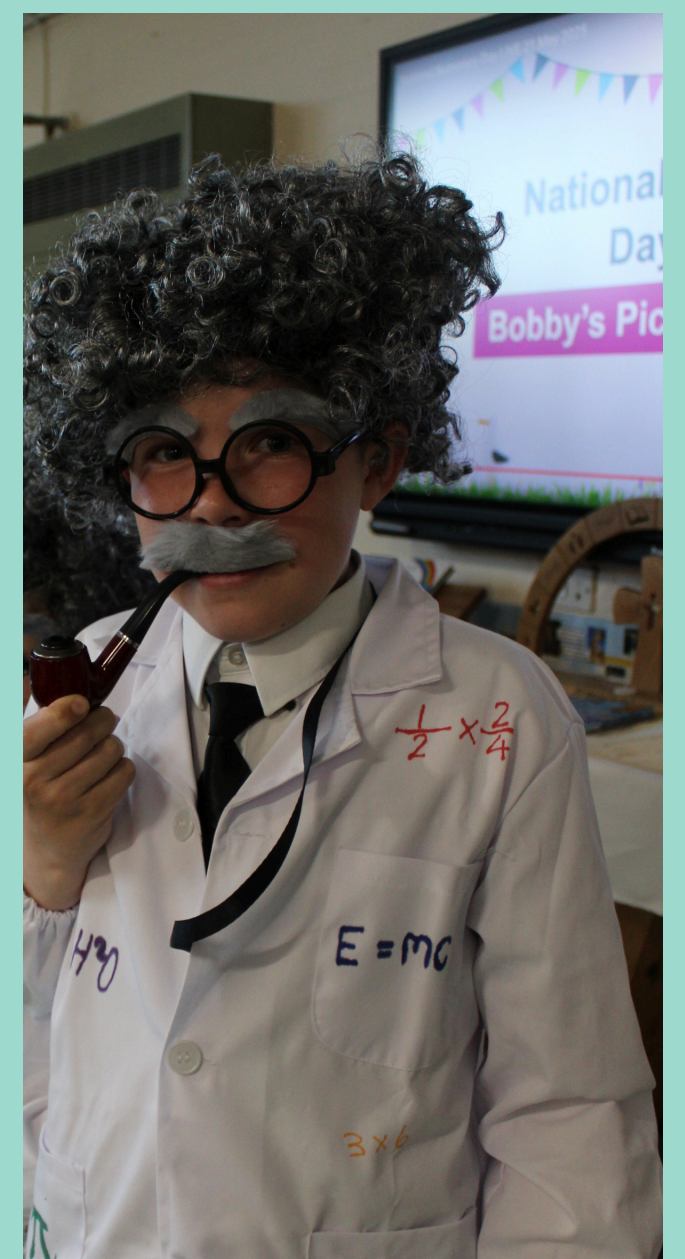
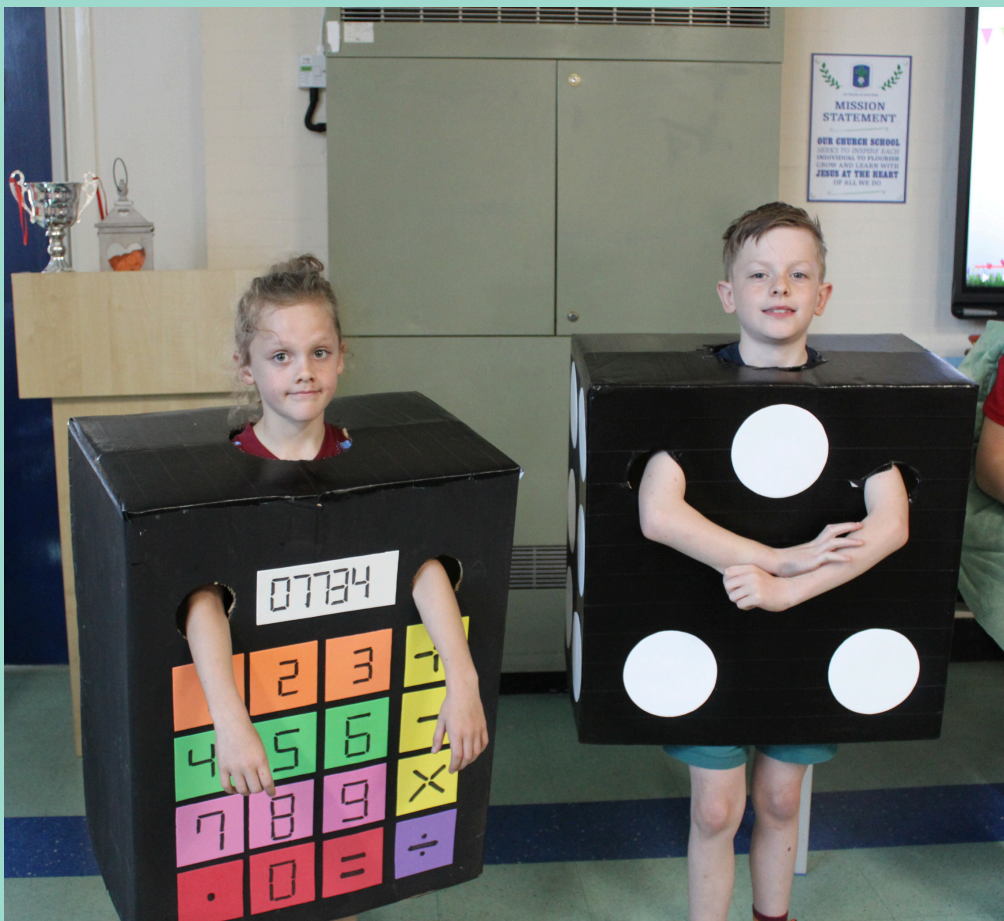
Ash class visited Thornton Hall Farm this half term, the sun was shining and the children had a fantastic time. Our favourite part was the tractor ride!





National Numeracy Day

On Wednesday 21st May, we celebrated National Numeracy Day in school. Both children and staff came to school dressed as something mathematical. Take a look at some of the outfits below!

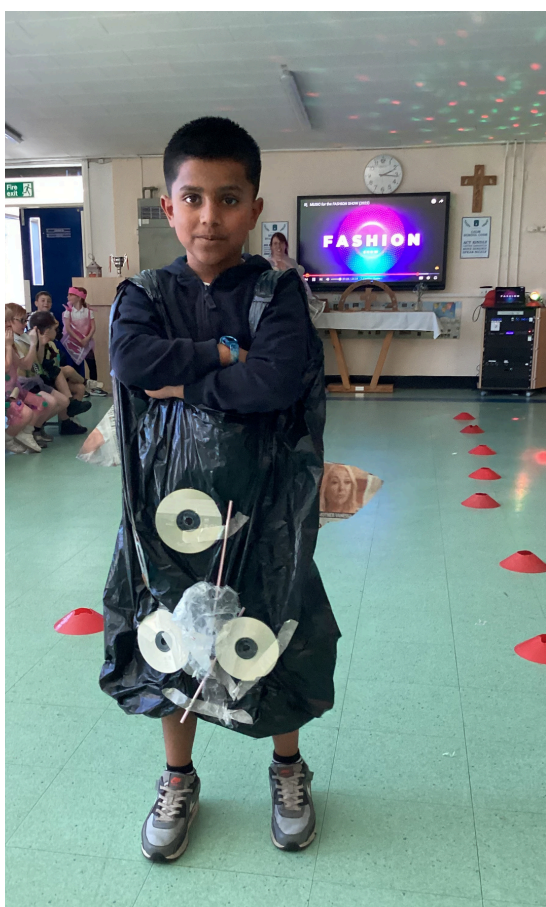


We had a fantastic day celebrating mathematics!



KS1 Trashion Show

What an amazing week we have had and what a lot of budding designers we have in our midst! Early on in the week, we looked at examples of trashion fashion and identified features that we liked. The next few days were spent exploring joining techniques and making a prototype. Friday was all systems go! Our classes were turned into a workshop where no design was too difficult. Our whole week built up to St James' very own Fashion Show where we saw some top models parade their exquisite creations. We loved it and love trashion fashion!





Every Day and Every Minute Counts

Research shows that children with good attendance perform better in their exams than those with poor attendance. When your child misses school, they are missing out on valuable learning. If they miss school regularly, they are missing out on learning that may never be caught up.

Friendships and social activities are a vital part of school life that enhances self-confidence and wellbeing. When children experience extended absence, they often struggle to integrate back into friendship groups and can experience social difficulties, alongside struggling with their academic studies.



0 days absent = 0 missed lessons	→	100%	→	Perfect
4 days absent = 20 missed lessons	→	98%	→	Very good
8 days absent = 40 missed lessons	→	96%	→	Good
10 days absent = 50 missed lessons	→	95%	→	Improvement needed
11 days absent = 55 missed lessons	→	94%	→	Concerned
19 days absent = 95 missed lessons	→	90%	→	Very concerned
29 days absent = 145 missed lessons	→	85%	→	Significant impact on learning



**5 days absence over the whole
school year**

97-100%

**Your child has a good chance of
success and progress**

**20 days absence over the whole
school year**

90%

**Your child has less chance of
success and making progress is
harder**

**20+ days absence over the
whole school year**

Under 90%

**This is detrimental to your
child's progress**

Minutes count – Being Late means Lost Learning

How late is your child to school?	How many lessons do they miss? Lessons are 1 hour
5 minutes late each day	16 lessons
10 minutes late each day	32 lessons
15 mins late each day	48 lessons
20 mins each day	63 lessons
30 mins each day	95 lessons

There are 175 days each year where your child is not in school, these days are for family time, holidays & appointments.



Upcoming Events

Monday 2nd June

Inset Day - **School Closed**

Tuesday 3rd June

School re-opens

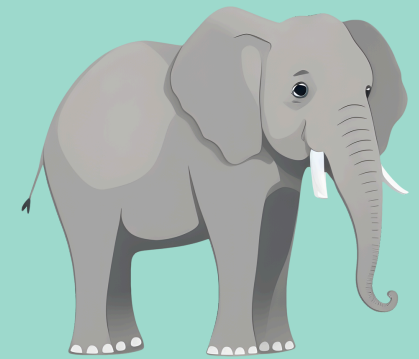


Thursday 5th June

Willow Class - Blackpool Zoo

Friday 6th June

Beech Class - Blackpool Zoo



Friday 13th June

Family Friday - Father's Day Lunch

Wednesday 18th June

Elm Class - Blackpool Zoo



Thursday 19th June

WW2 Visitor in school -
Sycamore/Hawthorn/Oak

Friday 20th June

Family Friday - Father's Day Lunch





Term Dates 2024/2025

**Please see below our Term Dates for the 2024/2025
Academic Year.**



School Term & Holiday Patterns 2024-25

Autumn Term 2024

INSET (Closed to pupils)	Monday 2 nd September 2024
Re-open to pupils	Tuesday 3 rd September 2024
Mid Term Closure	Monday 21 st to Friday 25 th October (inclusive)
INSET (Closed to pupils)	Monday 28 th October 2024
Re-open to Pupils	Tuesday 29 th October 2024
Closure after school	Thursday 19 th December at 1.30pm
INSET (Closed to pupils)	Friday 20 th December 2024

Spring Term 2025

Re-open to pupils	Monday 6 th January 2025
Mid Term Closure	Monday 17 th February to Friday 21 st February 2025 (inclusive)
Closure after school	Friday 4 th April 2025 at 1.30pm

Summer Term 2025

INSET (Closed to pupils)	Tuesday 22 nd April 2025
Re-open to pupils	Wednesday 23 rd April 2025
May Day Closure	Monday 5 th May 2025
Mid Term Closure	Monday 26 th May to Friday 30 st May 2025 (inclusive)
INSET (Closed to pupils)	Monday 2 nd June 2025
Re-open to pupils	Tuesday 3 rd June 2025
Closure after school	Tuesday 22 nd July at 1.30pm



Term Dates 2025/2026

**Please see below our Term Dates for the 2025/2026
Academic Year.**



School Term & Holiday Patterns 2025-26

Autumn Term 2025

Re-open to pupils	Monday 1 st September 2025
Mid Term Closure	Monday 20 th October to Friday 31 st October 2025 (inclusive)
Re-open to Pupils	Monday 3 rd November
Closure after school	Friday 19 th December 2025 at 1.30pm

Spring Term 2026

Re-open to pupils	Monday 5 th January 2026
Mid Term Closure	Monday 16 th February to Friday 20 th February 2026 (inclusive)
Re-open to Pupils	Monday 23 rd February 2026
Closure after school	Thursday 2 nd April 2026 at 1.30pm

Summer Term 2026

Re-open to pupils	Monday 13 th April 2026
May Day Closure	Monday 4 th May 2026
Mid Term Closure	Monday 25 th May to Friday 5 th June 2026 (inclusive)
Re-open to pupils	Monday 8 th June 2026
Closure after school	Monday 20 th July at 1.30pm